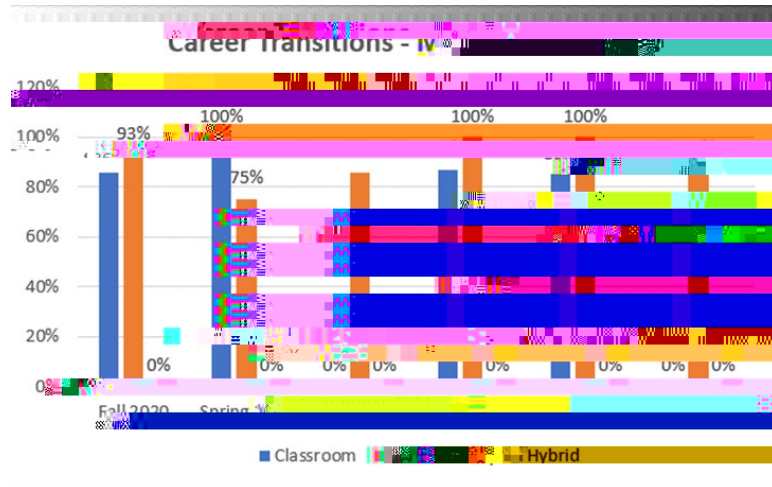


Career Transitions and Management Strategies (BSAD-2155)

Rating by interviewer on a mock interview (2021-2022)

80% of the students will score 80% or higher.

Total students assessed for the Fall 2021-Summer 2022 terms is 88.



Introduction to Entrepreneurship (ENTR-1050)

Business Opportunity Simulation (2021-2022)

80% of the students will score 80% or higher.

Total students assessed for the Fall 2021-Summer 2022 terms is 198.

